

1,137

NORTH CAROLINA EMERGENCY DEPARTMENT (ED) VISITS FOR OVERDOSE INVOLVING MEDICATIONS OR DRUGS WITH DEPENDENCY POTENTIAL: NOVEMBER 2020

1,137 Overdose ED Visits for Med/Drugs^ with Dependency Potential in November 2020

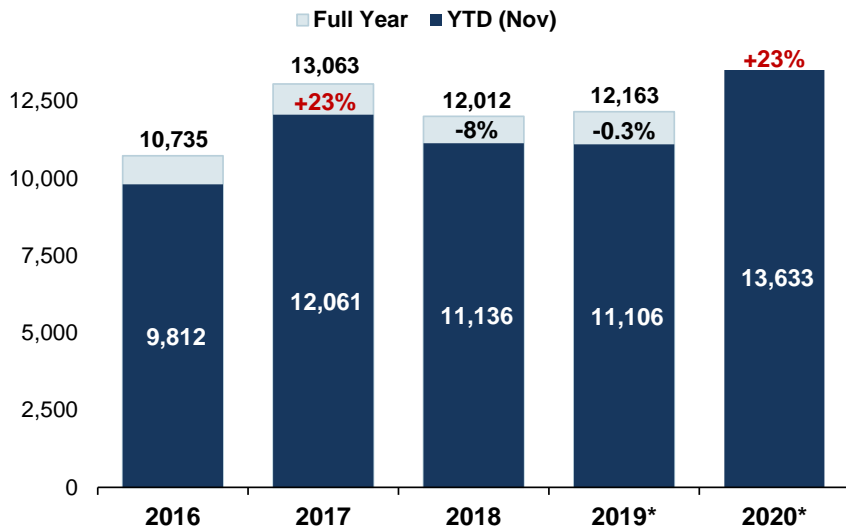
compared to **910** in November 2019

Data Source: NC DETECT: ED; Syndrome: Overdose: Unintentional/ Undetermined Medication or Drug Overdose (>14/<66) (ICD-9/10-CM)

^Report is based on initial encounter, **unintentional** and **undetermined** intent cases only, for ICD10CM overdose codes of drugs and medicaments with dependency potential within T40, T42, T43, T50.7, and T50.9.

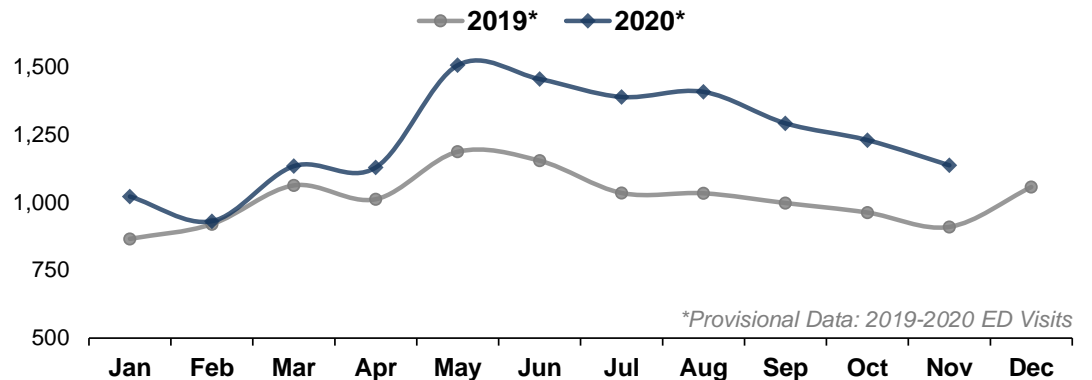
Note: Report is restricted to N.C. residents between the ages 15 to 65 years.

Med/Drug^ Overdose ED visits by Year: 2016-2020*



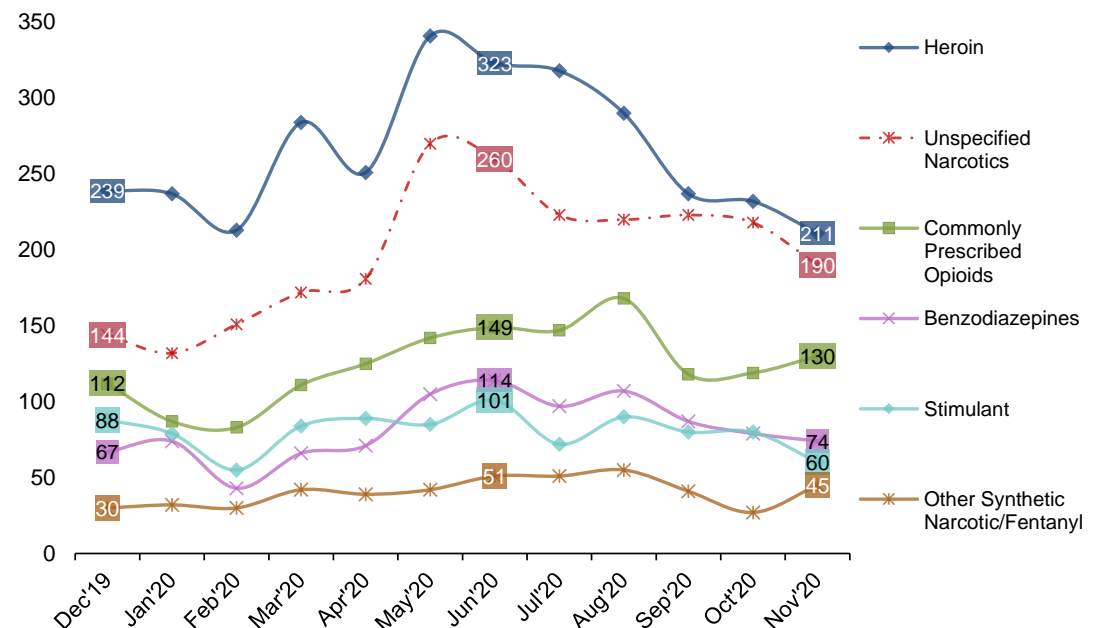
YTD: Year to Date *Provisional Data: 2019-2020 ED Visits
Percent change: YTD total compared to YTD total of previous year

Med/Drug^ Overdose ED visits by Month: 2019-2020*



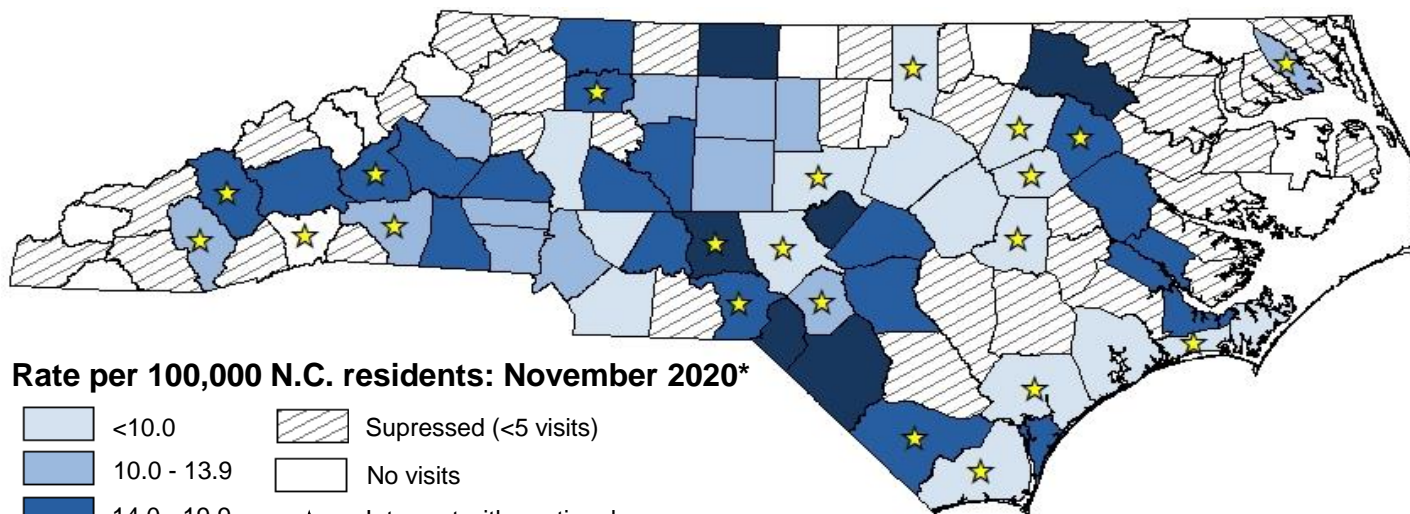
*Provisional Data: 2019-2020 ED Visits

Last 12 Months of ED visits by Med/Drug Class: 2019-2020*

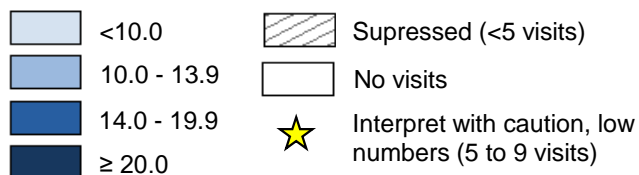


Drug classes shown are **not mutually exclusive**. A person may have more than one drug overdose diagnosis code, therefore, a person may be represented in multiple lines in the graph above. For case definitions, go to <https://www.injuryfreenc.ncdhhs.gov/DataSurveillance/poisoning/SummaryTableforPoisoningDefinitions-13Nov18-FINAL.pdf>

Monthly Med/Drug^ Overdose ED Visits Rate: November 2020*



Rate per 100,000 N.C. residents: November 2020*



Highest Monthly Rates of Med/Drug^ Overdose ED visits among Counties ≥10 visits: November 2020*

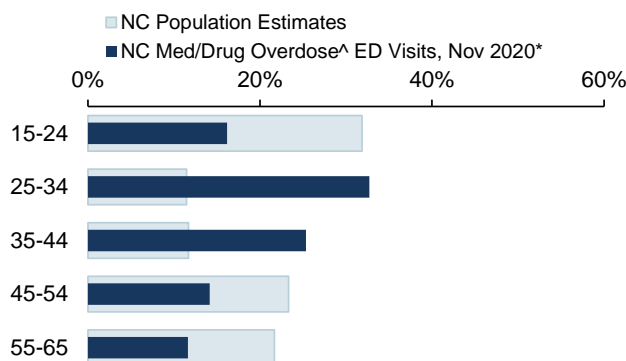
County	Count	Rate [†]
Lee	19	30.8
Scotland	10	28.7
Robeson	35	26.8
Halifax	12	24.0
Rockingham	21	23.1
Stanly	12	19.1
Surry	13	18.1
Davidson	30	17.9
Harnett	23	16.9
Craven	17	16.6
Burke	15	16.6
Cumberland	52	15.5
Pitt	28	15.5
Statewide	1,137	10.8

[†]Please note that rates are calculated using the current month of data. Counties listed in "Highest Monthly Rates of Med/ Drug Overdose^ ED visits" table will likely change each month. Therefore, the counties listed this month cannot be generalized as the top burden counties for the year.

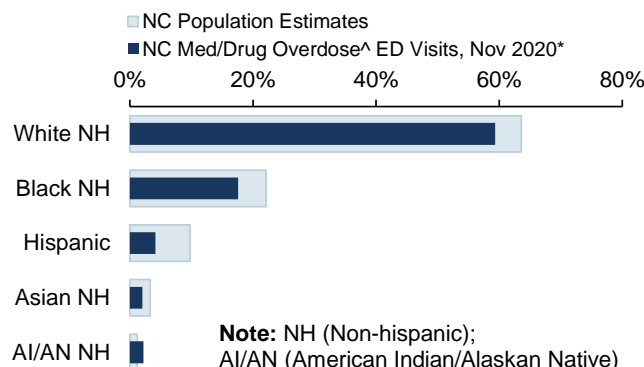
*Provisional Data: 2020 ED Visits

Demographics of Med/Drug Overdose^ ED Visits Compared to Overall NC Population Estimates

ED Visits by Age Group

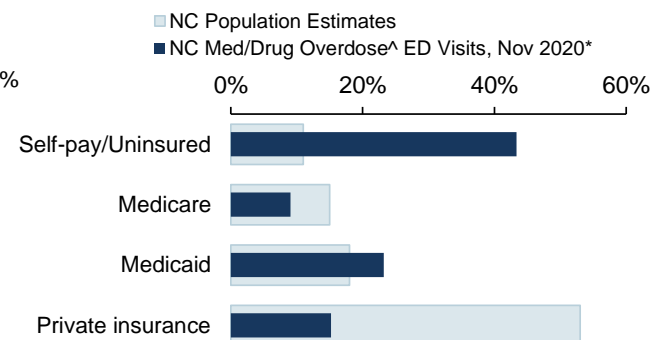


ED Visits by Race Ethnicity



Note: NH (Non-hispanic); AI/AN (American Indian/Alaskan Native)

ED Visits by Insurance Coverage



Data Sources: ED Data-NC DETECT is North Carolina's statewide syndromic surveillance system. ED visit data from NCDETECT are provisional and should not be considered final. For training on NCDETECT, contact Amy.Ising@ad.unc.edu; Population Data-U.S. Census Bureau, <http://quickfacts.census.gov>; Insurance coverage Data-Kaiser Family Foundation estimates based on the Census Bureau's American Community Survey, 2008-2017, www.kff.org/other/state-indicator/total-population.

^Report is based on initial encounter unintentional and undetermined intent cases only, for ICD10CM overdose codes of drugs and medicaments with dependency potential within T40, T42, T43, T50.7, and T50.9. Note: Report is restricted to N.C. residents between the ages 15 to 65 years. Self-pay ED visits are compared to the uninsured overall population estimate category.

*Provisional Data: 2020 ED Visits

