

1,131

NORTH CAROLINA EMERGENCY DEPARTMENT (ED) VISITS FOR OVERDOSE INVOLVING MEDICATIONS OR DRUGS WITH DEPENDENCY POTENTIAL: MAY 2024

1,131 Overdose ED Visits for Med/Drugs[^] with Dependency Potential in **May 2024**

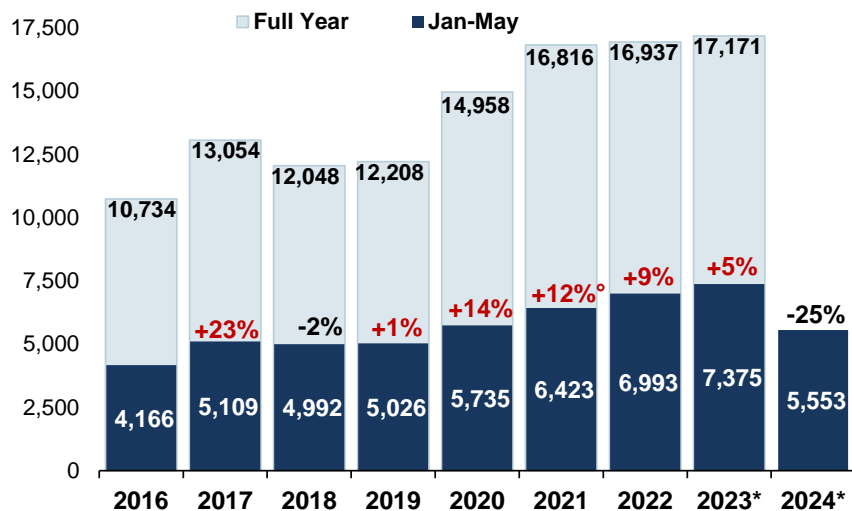
compared to **1,488** in May 2023

Data Source: NC DETECT: ED: Syndrome: Overdose: Unintentional/ Undetermined Medication or Drug Overdose (>14/<66) (ICD-9/10-CM)

[^]Report is based on initial encounter, **unintentional** and **undetermined** intent cases only, for ICD10CM overdose codes of drugs and medications with dependency potential within **T40, T42, T43, T50.7, and T50.9**.

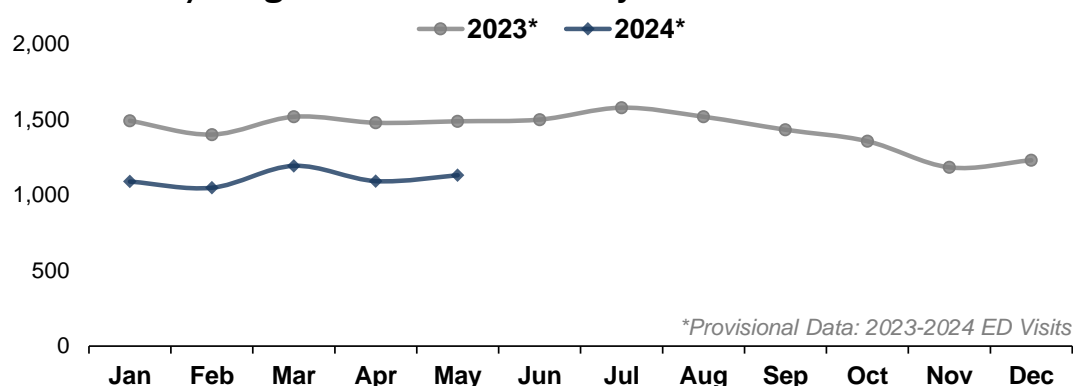
Note: Report is restricted to N.C. residents between the ages 15 to 65 years.

Med/Drug[^] Overdose ED visits by Year: 2016-2024*



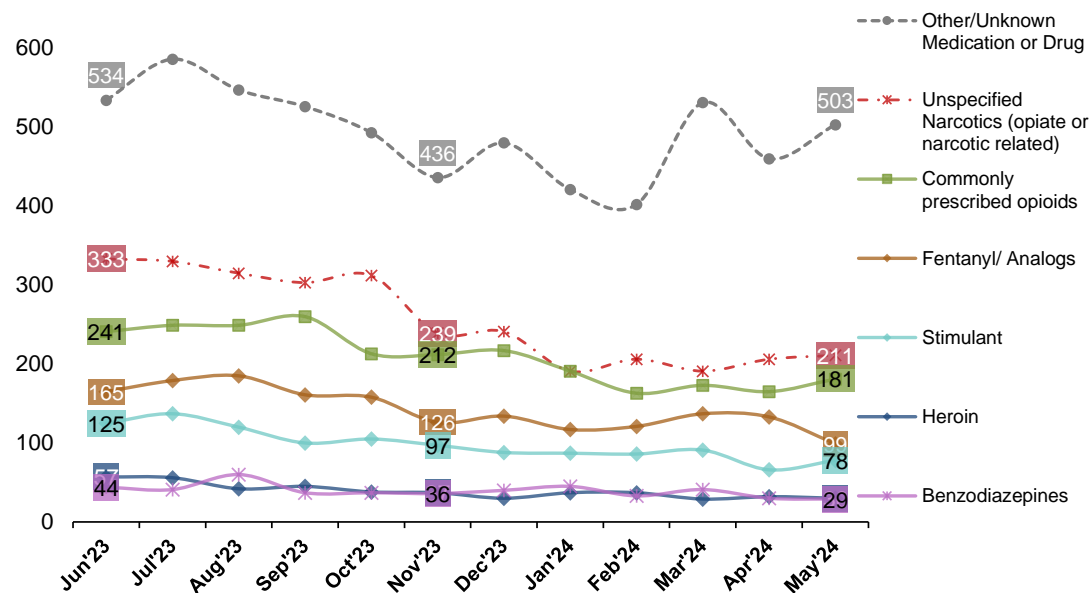
Percent change: YTD (year to date) total compared to YTD total of previous year, °There are known data quality gaps for May-June 2021 that are impacting the shown trends. Interpret the data for 2021 with caution. *Provisional Data: 2023-2024 ED Visits

Med/Drug[^] Overdose ED visits by Month: 2023-2024*



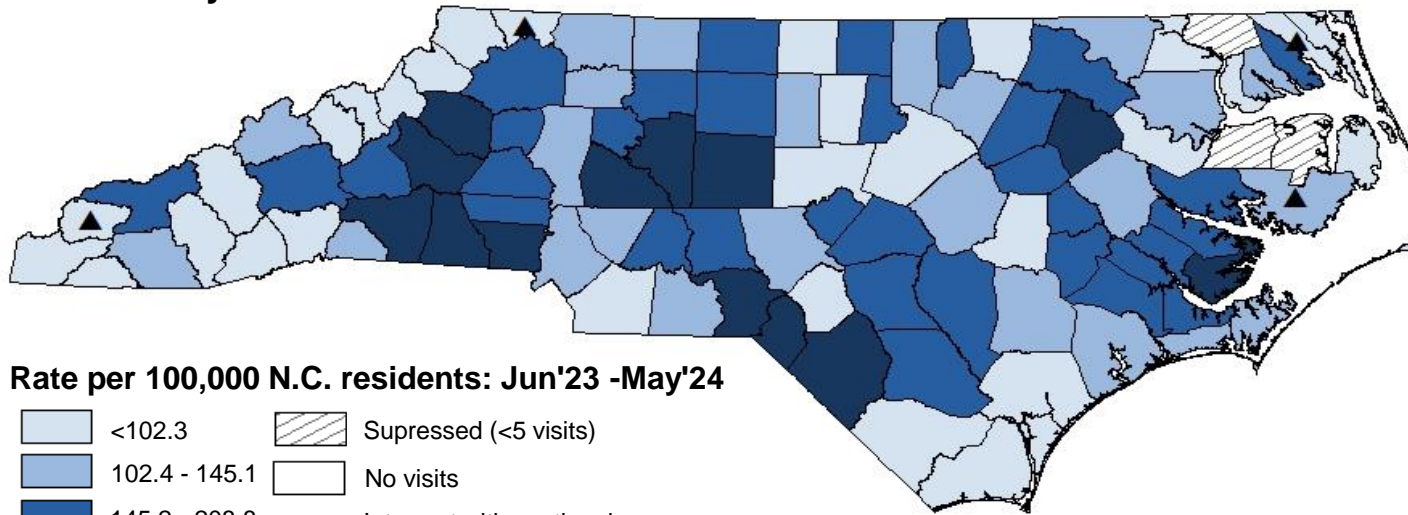
*Provisional Data: 2023-2024 ED Visits

Last 12 Months of ED visits by Med/Drug Class: 2023-2024*

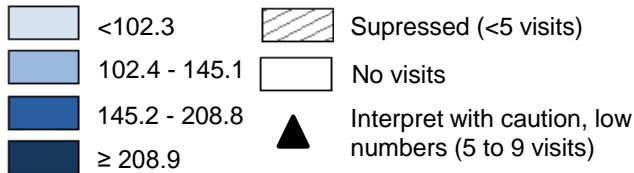


Note: Chart does not depict all possible drug classes. Drug classes shown are not mutually exclusive. A person may have more than one drug overdose diagnosis code, therefore, a person may be represented in multiple lines in the graph above. For case definitions, go to <https://www.injuryfreenc.ncdhhs.gov/DataSurveillance/poisoning/SummaryTableforPoisoningDefinitions.pdf>

Last 12 Months Med/Drug^ Overdose ED Visits Rate by County of Residence: Jun'23-May'24



Rate per 100,000 N.C. residents: Jun'23 -May'24



Highest Rates of Med/Drug^ Overdose ED visits among Counties Last 12 Months: Jun'23 -May'24

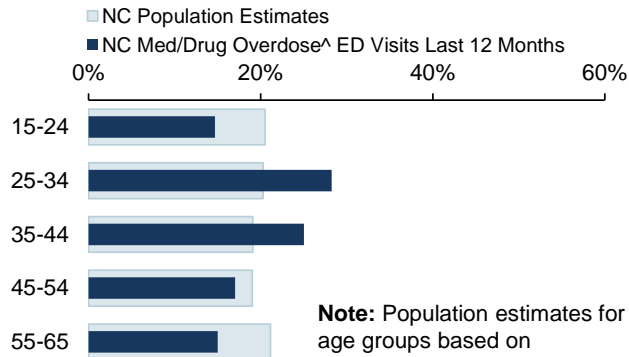
County	Count	Rate [†]
Richmond	191	426.1
Scotland	125	359.0
Robeson	350	267.9
Rutherford	177	264.1
Gaston	563	250.7
Caldwell	198	240.9
Pamlico	30	235.7
Randolph	334	232.5
Burke	205	226.6
Davidson	365	217.8
Rowan	308	216.8
Cleveland	210	214.4
Edgecombe	110	213.7
Statewide	15,349	146.3

[†]Please note that rates are calculated using the recent 12 months of data and 2022 population estimates. Counties listed in "Highest Monthly Rates of Med/Drug Overdose^ ED visits" table will likely change each month.

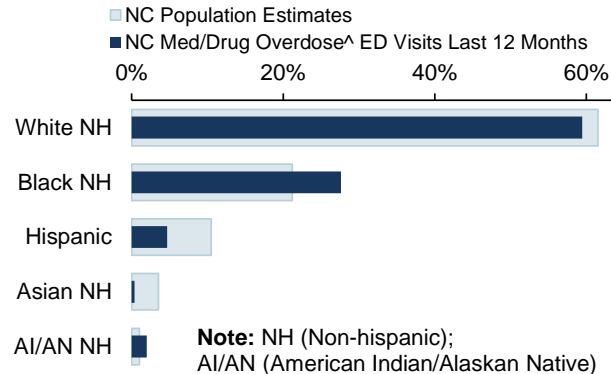
*Provisional Data: 2023-2024 ED Visits

Demographics of Med/Drug Overdose^ ED Visits Compared to Overall NC Population Estimates

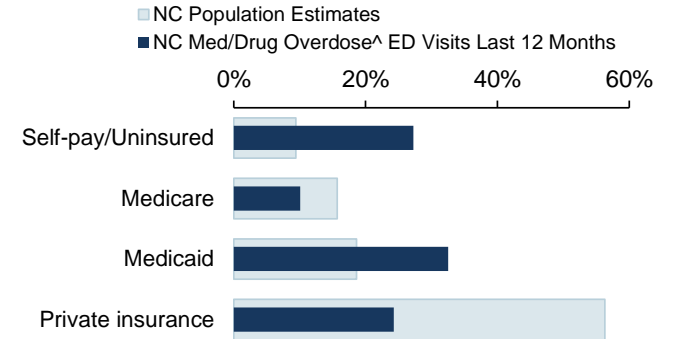
ED Visits by Age Group



ED Visits by Race Ethnicity



ED Visits by Insurance Coverage



Data Sources: ED Data-NC DETECT is North Carolina's statewide syndromic surveillance system. ED visit data from NC DETECT are provisional and should not be considered final. Population Data-U.S. Census Bureau, <http://quickfacts.census.gov>; Insurance coverage Data-Kaiser Family Foundation estimates based on the Census Bureau's American Community Survey, www.kff.org/other/state-indicator/total-population.

^Report is based on initial encounter unintentional and undetermined intent cases only, for ICD10CM overdose codes of drugs and medications with dependency potential within T40, T42, T43, T50.7, and T50.9. **Note:** Report is restricted to N.C. residents ages 15 to 65 years. *2023-2024 ED visits are provisional.



NC DEPARTMENT OF HEALTH AND HUMAN SERVICES
Division of Public Health

