

1,076

NORTH CAROLINA EMERGENCY DEPARTMENT (ED) VISITS FOR OVERDOSE INVOLVING MEDICATIONS OR DRUGS WITH DEPENDENCY POTENTIAL: JULY 2024

1,076 Overdose ED Visits for Med/Drugs[^] with Dependency Potential in July 2024

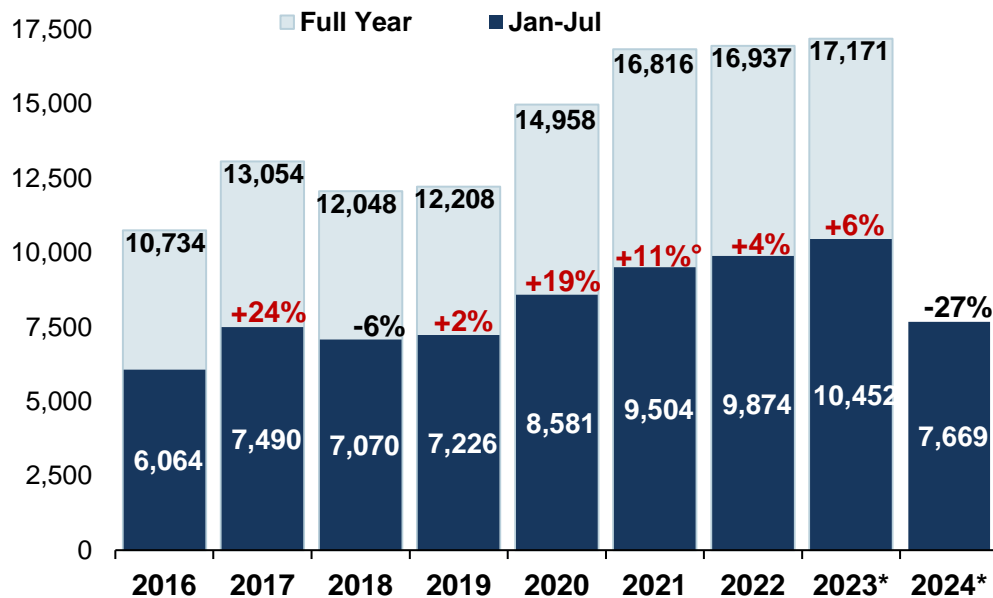
compared to **1,578** in July 2023

Data Source: NC DETECT: ED; Syndrome: Overdose: Unintentional/ Undetermined Medication or Drug Overdose (>14/<66) (ICD-9/10-CM)

[^]Report is based on initial encounter, **unintentional** and **undetermined** intent cases only, for ICD10CM overdose codes of drugs and medications with dependency potential within T40, T42, T43, T50.7, and T50.9.

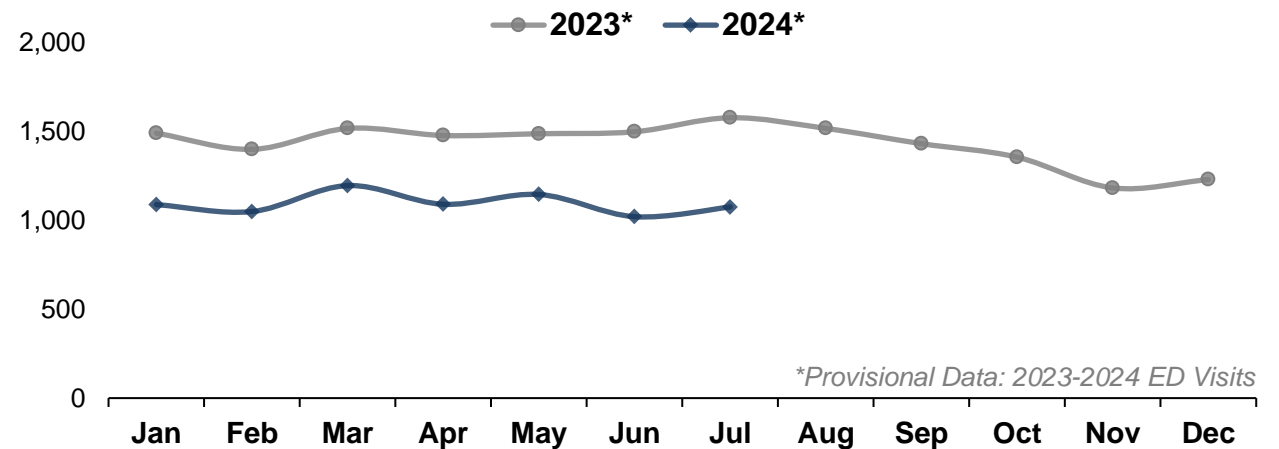
Note: Report is restricted to N.C. residents between the ages 15 to 65 years.

Med/Drug[^] Overdose ED visits by Year: 2016-2024*



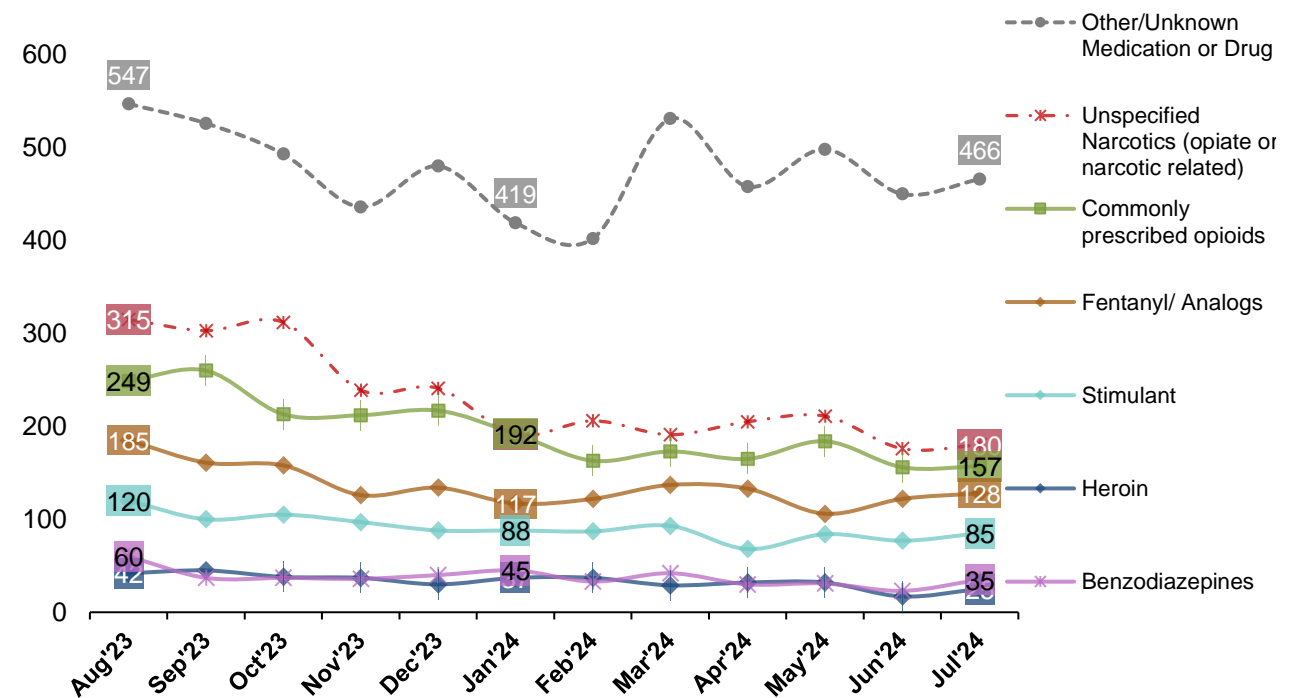
Percent change: YTD (year to date) total compared to YTD total of previous year, ^oThere are known data quality gaps for May-June 2021 that are impacting the shown trends. Interpret the data for 2021 with caution. *Provisional Data: 2023-2024 ED Visits

Med/Drug[^] Overdose ED visits by Month: 2023-2024*



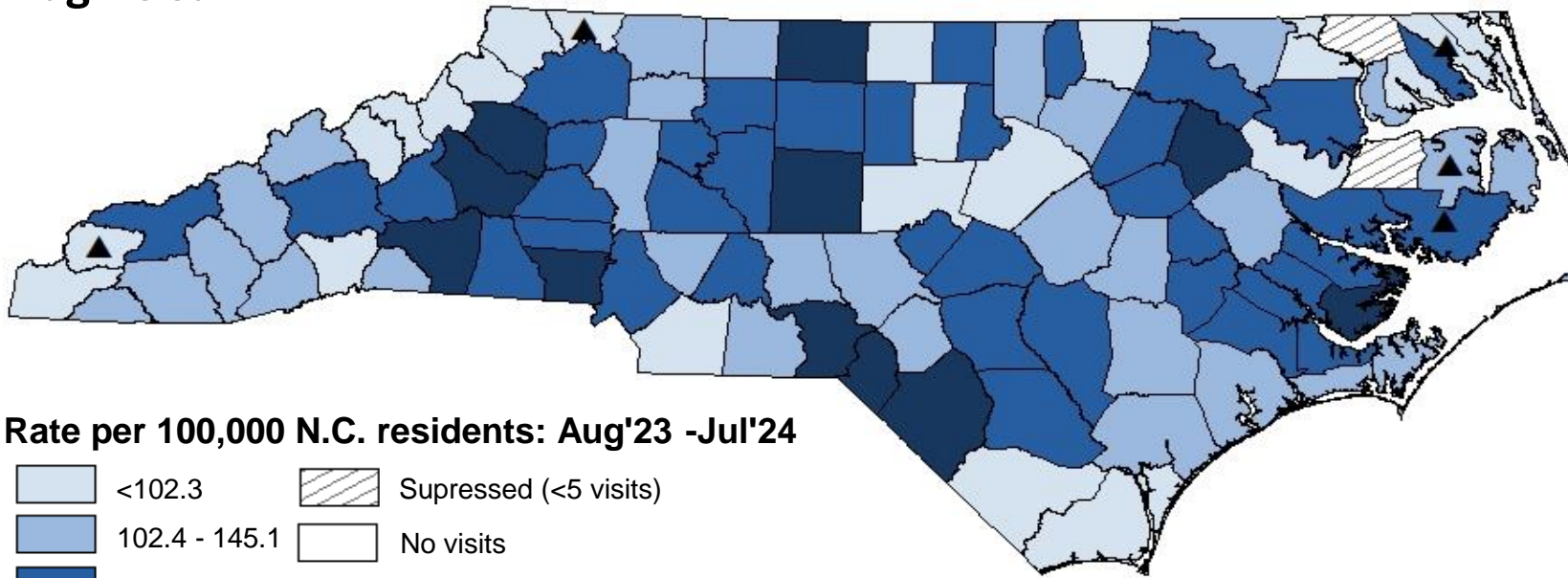
*Provisional Data: 2023-2024 ED Visits

Last 12 Months of ED visits by Med/Drug Class: 2023-2024*

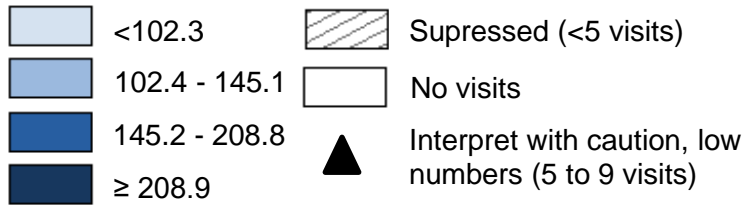


Note: Chart does not depict all possible drug classes. Drug classes shown are not mutually exclusive. A person may have more than one drug overdose diagnosis code, therefore, a person may be represented in multiple lines in the graph above. For case definitions, go to <https://www.injuryfreenc.ncdhhs.gov/DataSurveillance/poisoning/SummaryTableforPoisoningDefinitions.pdf>

Last 12 Months Med/Drug[^] Overdose ED Visits Rate by County of Residence: Aug'23-Jul'24



Rate per 100,000 N.C. residents: Aug'23 -Jul'24



*Provisional Data: 2023-2024 ED Visits

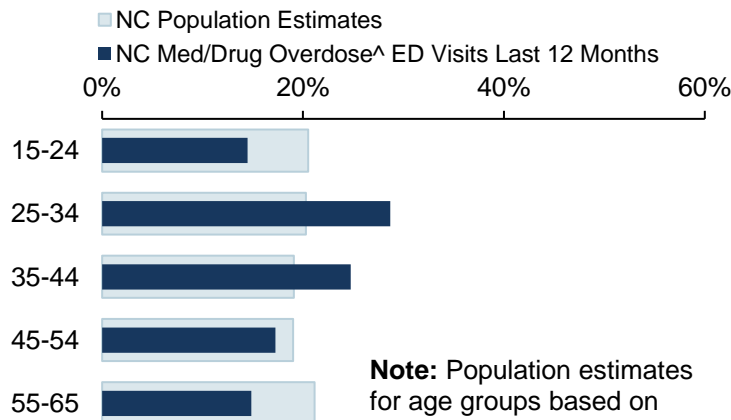
Highest Rates of Med/Drug[^] Overdose ED visits among Counties Last 12 Months: Aug'23 -Jul'24

County	Count	Rate [†]
Richmond	189	421.6
Scotland	123	353.2
Rutherford	175	261.1
Robeson	313	239.6
Caldwell	186	226.3
Randolph	317	220.6
Burke	197	217.7
Gaston	487	216.9
Edgecombe	110	213.7
Pamlico	27	212.2
Rockingham	182	200.0
Rowan	281	197.8
Davidson	328	195.7
Statewide	14,388	137.2

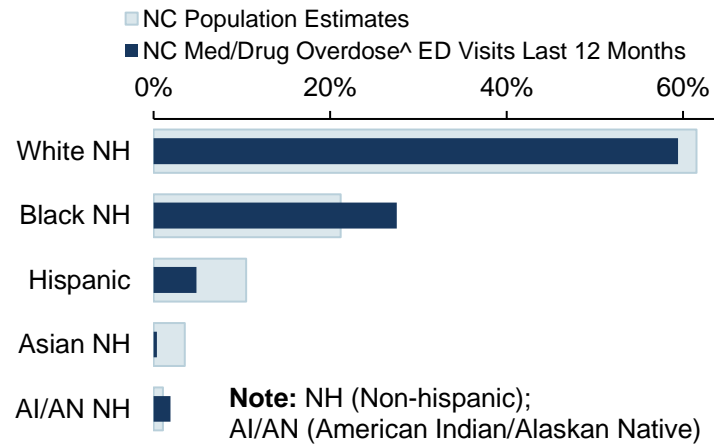
[†]Please note that rates are calculated using the recent 12 months of data and 2022 population estimates. Counties listed in "Highest Monthly Rates of Med/Drug Overdose[^] ED visits" table will likely change each month.

Demographics of Med/Drug Overdose[^] ED Visits Compared to Overall NC Population Estimates

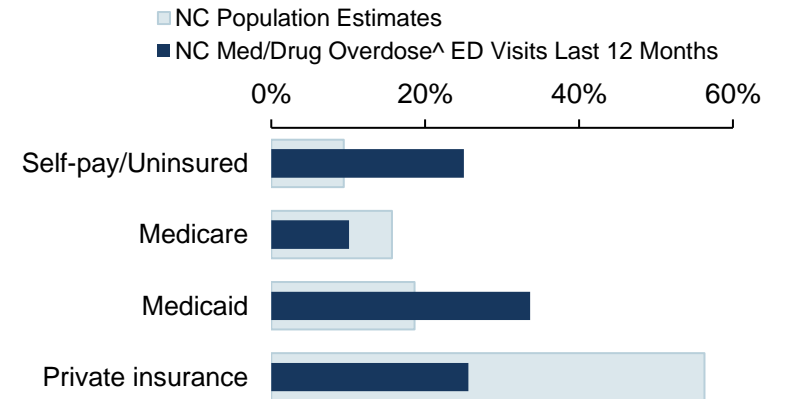
ED Visits by Age Group



ED Visits by Race Ethnicity



ED Visits by Insurance Coverage



Data Sources: ED Data-NC DETECT is North Carolina's statewide syndromic surveillance system. ED visit data from NC DETECT are provisional and should not be considered final. Population Data-U.S. Census Bureau, <http://quickfacts.census.gov>; Insurance coverage Data-Kaiser Family Foundation estimates based on the Census Bureau's American Community Survey, www.kff.org/other/state-indicator/total-population.

[^]Report is based on initial encounter unintentional and undetermined intent cases only, for ICD10CM overdose codes of drugs and medicaments with dependency potential within T40, T42, T43, T50.7, and T50.9. **Note:** Report is restricted to N.C. residents ages 15 to 65 years. *2023-2024 ED visits are provisional.



NC DEPARTMENT OF HEALTH AND HUMAN SERVICES
Division of Public Health

