

1,127

NORTH CAROLINA EMERGENCY DEPARTMENT (ED) VISITS FOR OVERDOSE INVOLVING MEDICATIONS OR DRUGS WITH DEPENDENCY POTENTIAL: DECEMBER 2023

1,127 Overdose ED Visits for Med/Drugs^ with Dependency Potential in **December 2023**

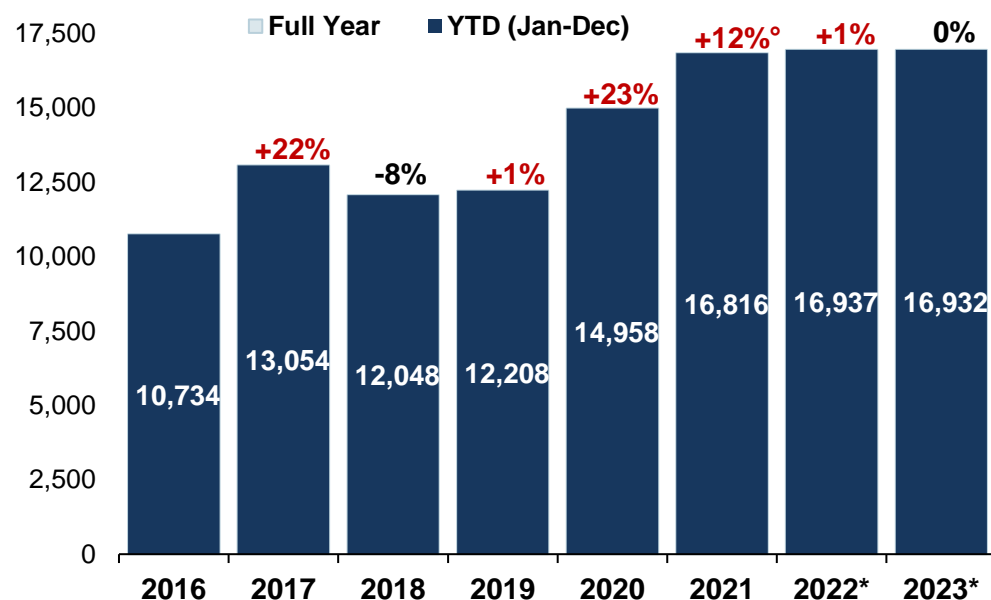
compared to **1,419** in December 2022

Data Source: NC DETECT: ED; Syndrome: Overdose: Unintentional/ Undetermined Medication or Drug Overdose (>14/<66) (ICD-9/10-CM)

^Report is based on initial encounter, **unintentional** and **undetermined** intent cases only, for ICD10CM overdose codes of drugs and medicaments with dependency potential within T40, T42, T43, T50.7, and T50.9.

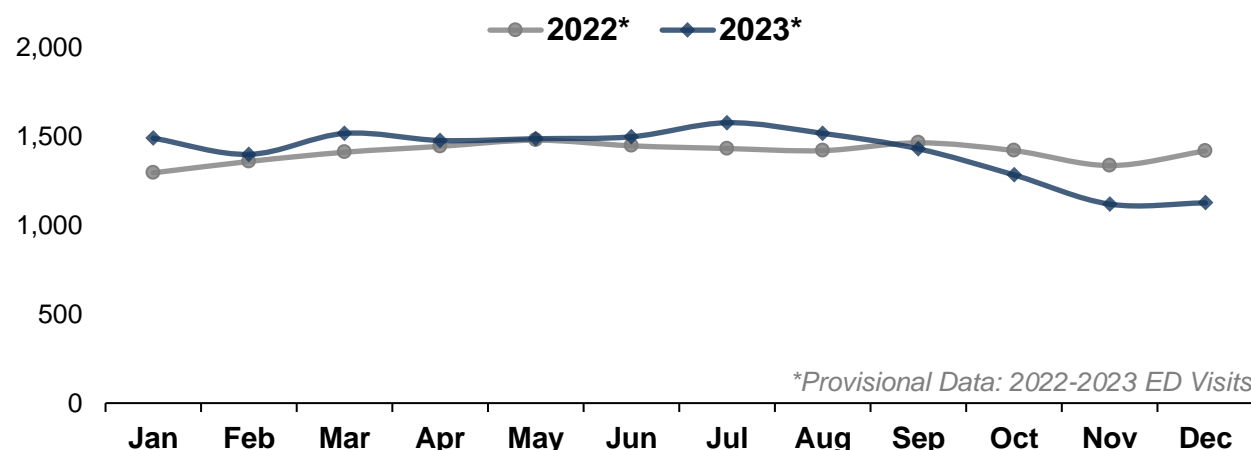
Note: Report is restricted to N.C. residents between the ages 15 to 65 years.

Med/Drug^ Overdose ED visits by Year: 2016-2023*



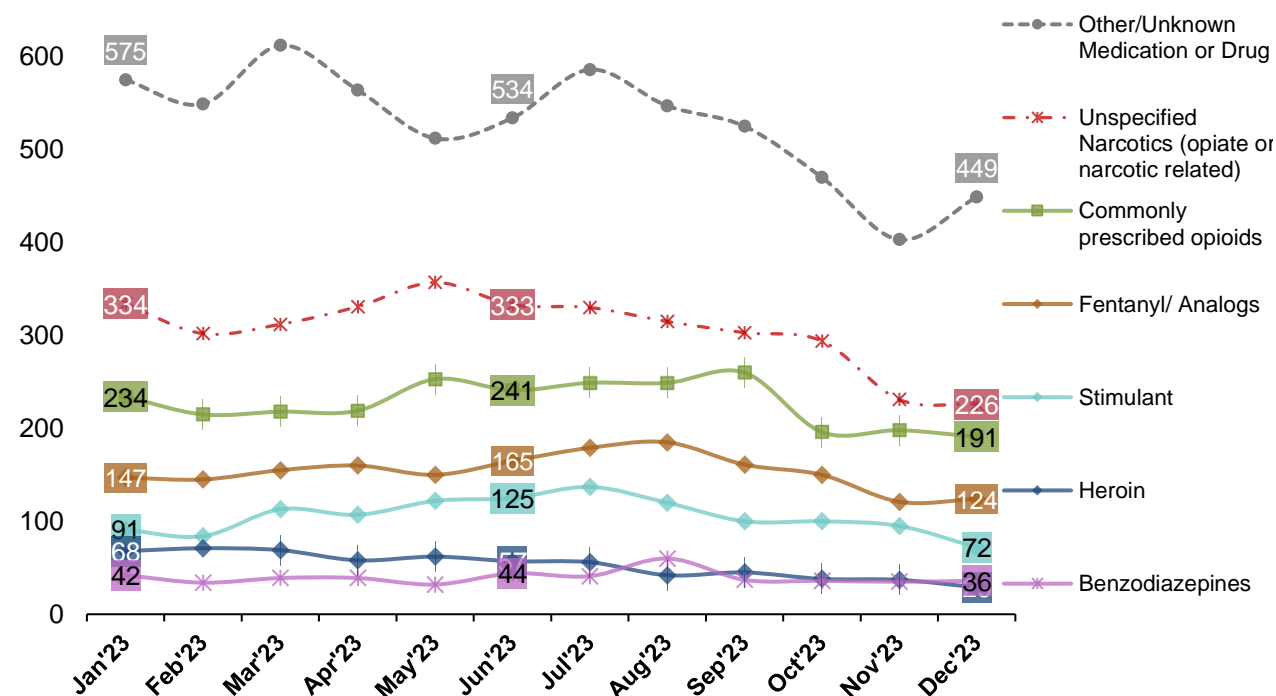
Percent change: YTD (year to date) total compared to YTD total of previous year, °There are known data quality gaps for May-June 2021 that are impacting the shown trends. Interpret the data for 2021 with caution. *Provisional Data: 2022-2023 ED Visits

Med/Drug^ Overdose ED visits by Month: 2022-2023*



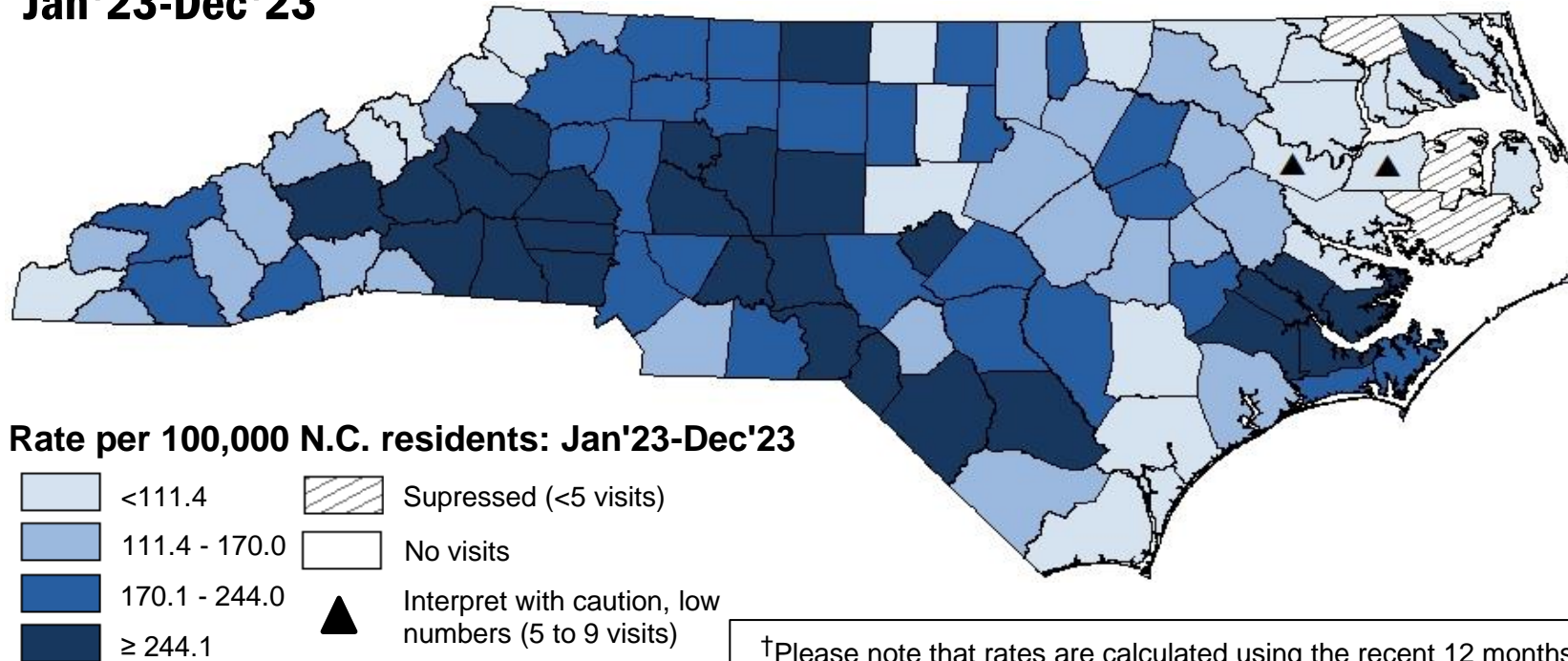
*Provisional Data: 2022-2023 ED Visits

Last 12 Months of ED visits by Med/Drug Class: 2022-2023*



Note: Chart does not depict all possible drug classes. Drug classes shown are not mutually exclusive. A person may have more than one drug overdose diagnosis code, therefore, a person may be represented in multiple lines in the graph above. For case definitions, go to <https://www.injuryfreenc.ncdhhs.gov/DataSurveillance/poisoning/SummaryTableforPoisoningDefinitions.pdf>

Last 12 Months Med/Drug[^] Overdose ED Visits Rate by County of Residence: Jan'23-Dec'23



*Provisional Data: 2022-2023 ED Visits

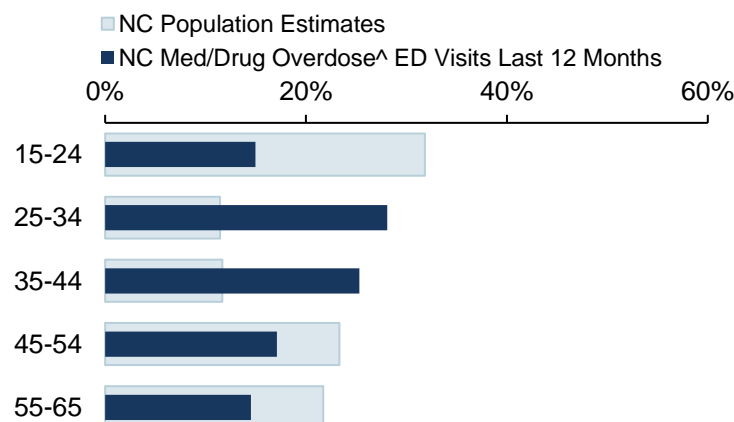
†Please note that rates are calculated using the recent 12 months of data and 2021 population estimates. Counties listed in "Highest Monthly Rates of Med/ Drug Overdose[^] ED visits" table will likely change each month.

Highest Rates of Med/Drug[^] Overdose ED visits among Counties Last 12 Months: Jan'23-Dec'23

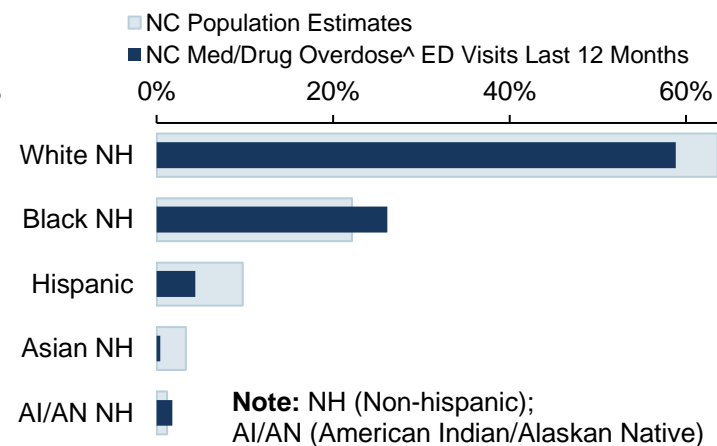
County	Count	Rate [†]
Richmond	224	499.7
Scotland	112	321.6
Gaston	652	290.4
Robeson	373	285.6
Rutherford	186	277.5
Jones	26	276.0
Burke	246	271.9
Caldwell	211	256.8
Rowan	360	253.4
Cleveland	241	246.1
Randolph	353	245.7
Pamlico	31	243.6
Davidson	401	239.2
Statewide	16,932	161.4

Demographics of Med/Drug Overdose[^] ED Visits Compared to Overall NC Population Estimates

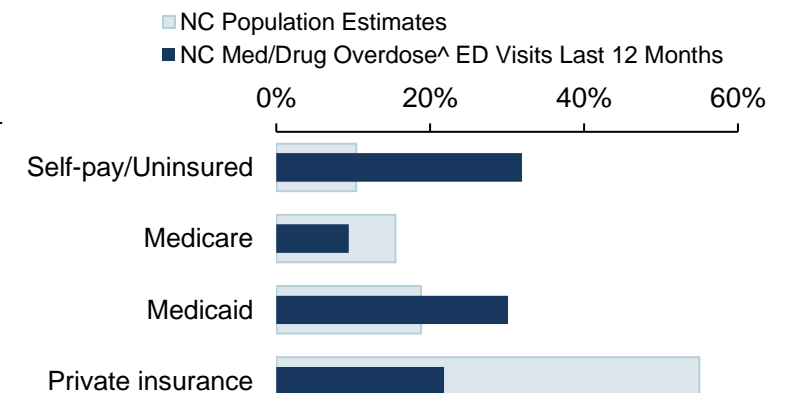
ED Visits by Age Group



ED Visits by Race Ethnicity



ED Visits by Insurance Coverage



Data Sources: ED Data-NC DETECT is North Carolina's statewide syndromic surveillance system. ED visit data from NCDETECT are provisional and should not be considered final. Population Data-U.S. Census Bureau, <http://quickfacts.census.gov>; Insurance coverage Data-Kaiser Family Foundation estimates based on the Census Bureau's American Community Survey, www.kff.org/other/state-indicator/total-population.

[^]Report is based on initial encounter unintentional and undetermined intent cases only, for ICD10CM overdose codes of drugs and medicaments with dependency potential within T40, T42, T43, T50.7, and T50.9. **Note:** Report is restricted to N.C. residents between the ages 15 to 65 years. *2022-2023 ED visits are provisional.

