

# 1,081

## NORTH CAROLINA EMERGENCY DEPARTMENT (ED) VISITS FOR OVERDOSE INVOLVING MEDICATIONS OR DRUGS WITH DEPENDENCY POTENTIAL: APRIL 2024

**1,081** Overdose ED Visits for Med/Drugs<sup>^</sup> with Dependency Potential in **April 2024**

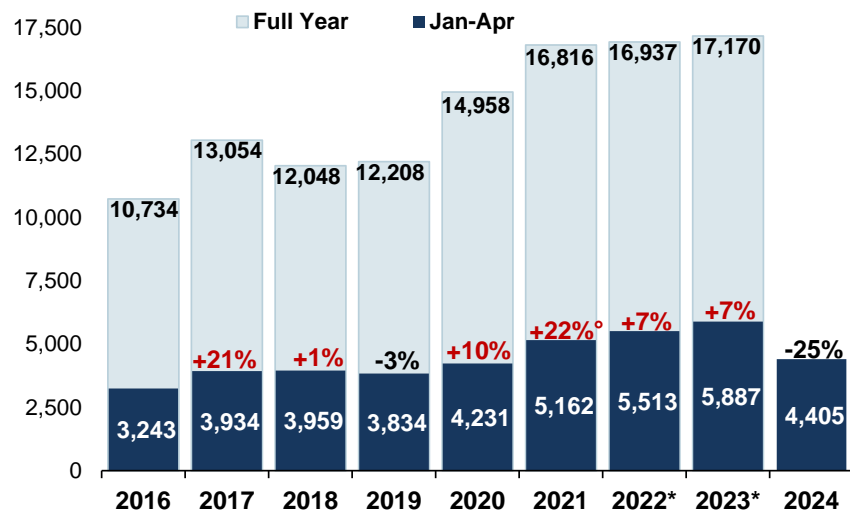
compared to **1,478** in April 2023

Data Source: NC DETECT: ED; Syndrome: Overdose: Unintentional/ Undetermined Medication or Drug Overdose (>14/<66) (ICD-9/10-CM)

<sup>^</sup>Report is based on initial encounter, **unintentional** and **undetermined** intent cases only, for ICD10CM overdose codes of drugs and medications with dependency potential within T40, T42, T43, T50.7, and T50.9.

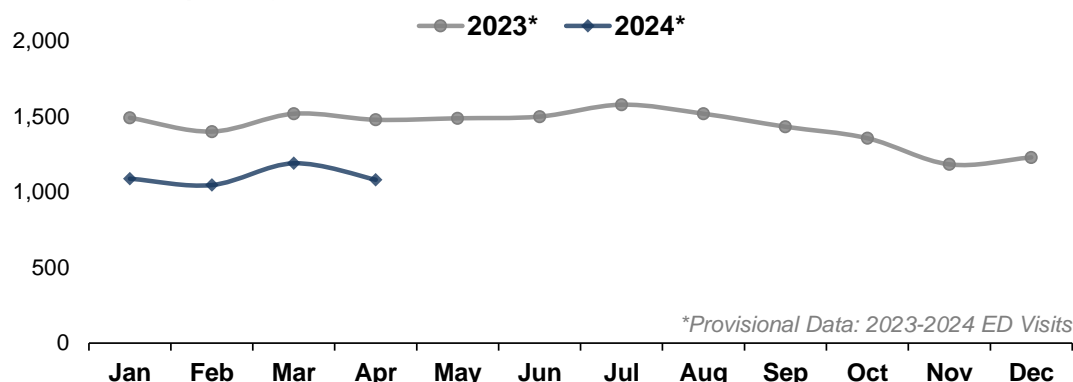
**Note:** Report is restricted to N.C. residents between the ages 15 to 65 years.

### Med/Drug<sup>^</sup> Overdose ED visits by Year: 2016-2024\*



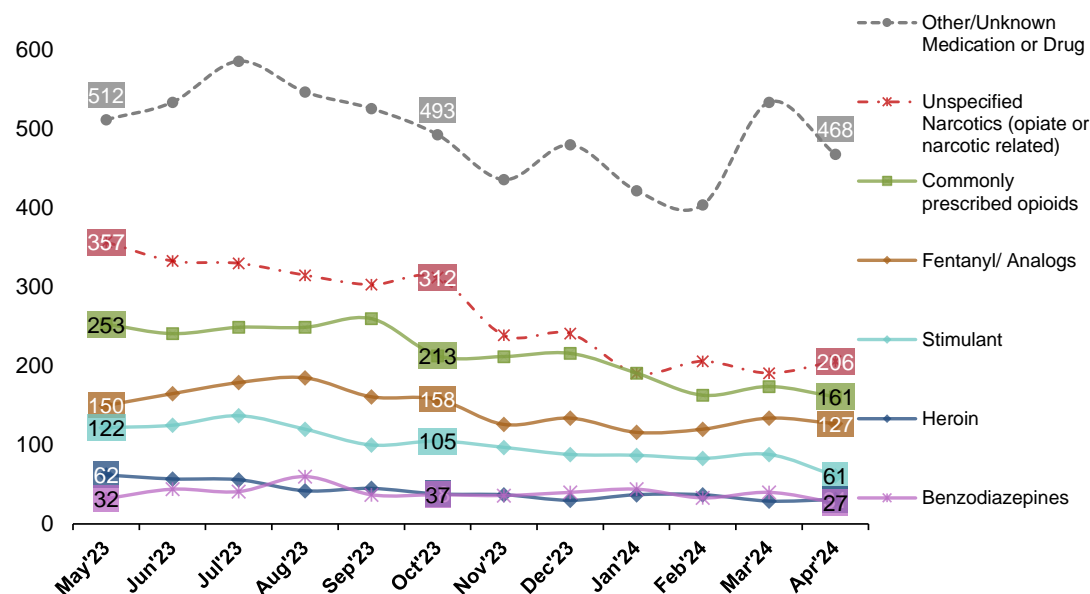
Percent change: YTD (year to date) total compared to YTD total of previous year, <sup>o</sup>There are known data quality gaps for May-June 2021 that are impacting the shown trends. Interpret the data for 2021 with caution. \*Provisional Data: 2023-2024 ED Visits

### Med/Drug<sup>^</sup> Overdose ED visits by Month: 2023-2024\*



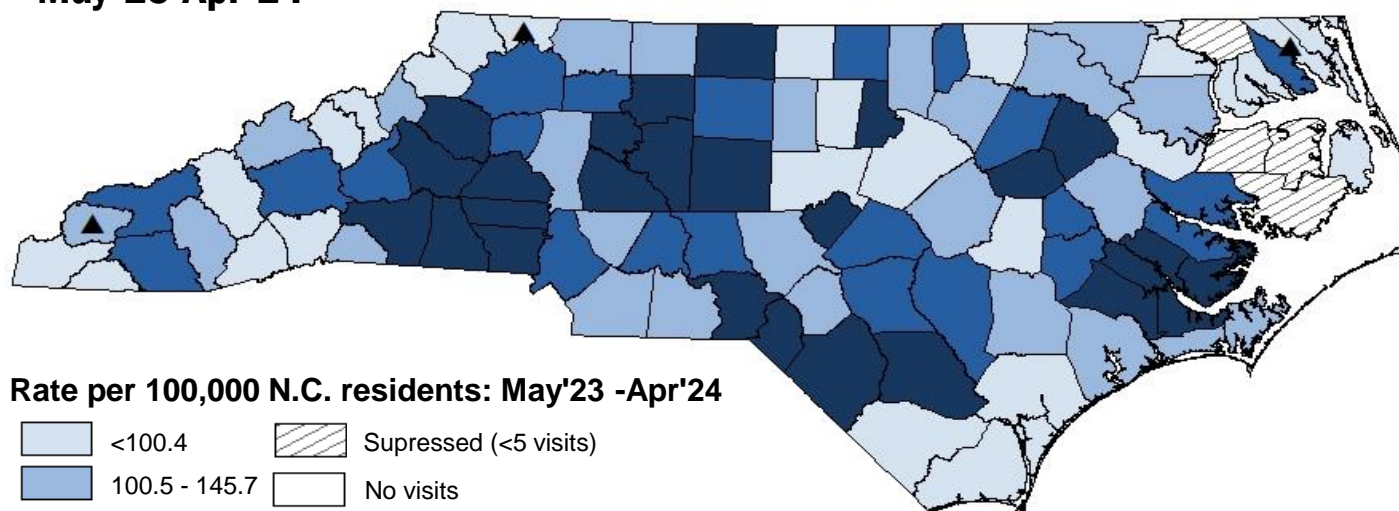
\*Provisional Data: 2023-2024 ED Visits

### Last 12 Months of ED visits by Med/Drug Class: 2023-2024\*

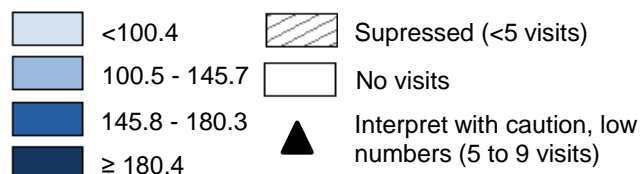


**Note:** Chart does not depict all possible drug classes. Drug classes shown are not mutually exclusive. A person may have more than one drug overdose diagnosis code, therefore, a person may be represented in multiple lines in the graph above. For case definitions, go to <https://www.injuryfreenc.ncdhhs.gov/DataSurveillance/poisoning/SummaryTableforPoisoningDefinitions.pdf>

## Last 12 Months Med/Drug<sup>^</sup> Overdose ED Visits Rate by County of Residence: May'23-Apr'24



Rate per 100,000 N.C. residents: May'23 -Apr'24



\*Provisional Data: 2023-2024 ED Visits

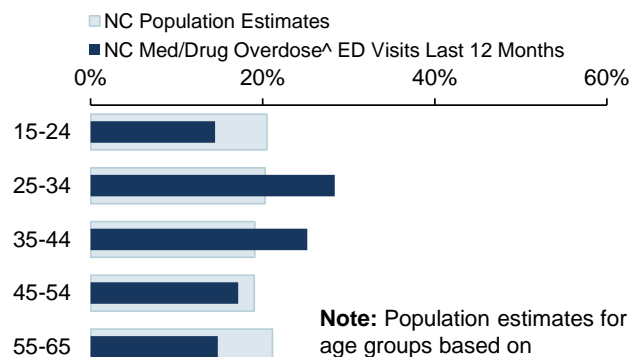
†Please note that rates are calculated using the recent 12 months of data and 2022 population estimates. Counties listed in "Highest Monthly Rates of Med/Drug Overdose<sup>^</sup> ED visits" table will likely change each month.

## Highest Rates of Med/Drug<sup>^</sup> Overdose ED visits among Counties Last 12 Months: May'23 -Apr'24

County	Count	Rate <sup>†</sup>
Richmond	202	450.6
Scotland	123	353.2
Robeson	357	273.3
Rutherford	180	268.5
Gaston	592	263.7
Caldwell	197	239.7
Pamlico	30	235.7
Jones	22	233.6
Randolph	333	231.8
Davidson	385	229.7
Burke	205	226.6
Rowan	320	225.2
Cleveland	218	222.6
<b>Statewide</b>	<b>15,688</b>	<b>149.6</b>

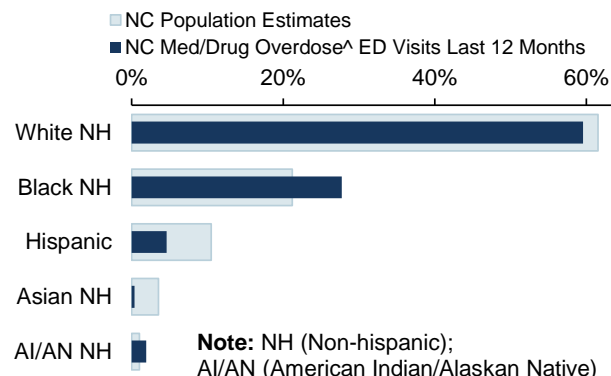
## Demographics of Med/Drug Overdose<sup>^</sup> ED Visits Compared to Overall NC Population Estimates

### ED Visits by Age Group



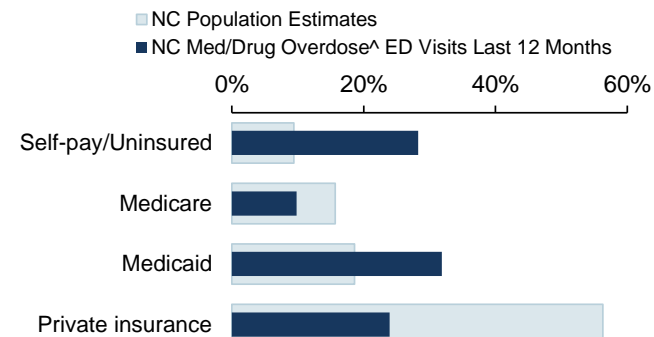
Note: Population estimates for age groups based on

### ED Visits by Race Ethnicity



Note: NH (Non-hispanic); AI/AN (American Indian/Alaskan Native)

### ED Visits by Insurance Coverage



**Data Sources:** ED Data-NC DETECT is North Carolina's statewide syndromic surveillance system. ED visit data from NC DETECT are provisional and should not be considered final. Population Data-U.S. Census Bureau, <http://quickfacts.census.gov>; Insurance coverage Data-Kaiser Family Foundation estimates based on the Census Bureau's American Community Survey, [www.kff.org/other/state-indicator/total-population](http://www.kff.org/other/state-indicator/total-population).

<sup>^</sup>Report is based on initial encounter unintentional and undetermined intent cases only, for ICD10CM overdose codes of drugs and medicaments with dependency potential within T40, T42, T43, T50.7, and T50.9. **Note:** Report is restricted to N.C. residents ages 15 to 65 years. \*2023-2024 ED visits are provisional.



NC DEPARTMENT OF  
HEALTH AND  
HUMAN SERVICES  
Division of Public Health

