

# 1,177

## NORTH CAROLINA EMERGENCY DEPARTMENT (ED) VISITS FOR OVERDOSE INVOLVING MEDICATIONS OR DRUGS WITH DEPENDENCY POTENTIAL: JULY 2022

### 1,177 Overdose ED Visits for Med/Drugs<sup>^</sup> with Dependency Potential in July 2022

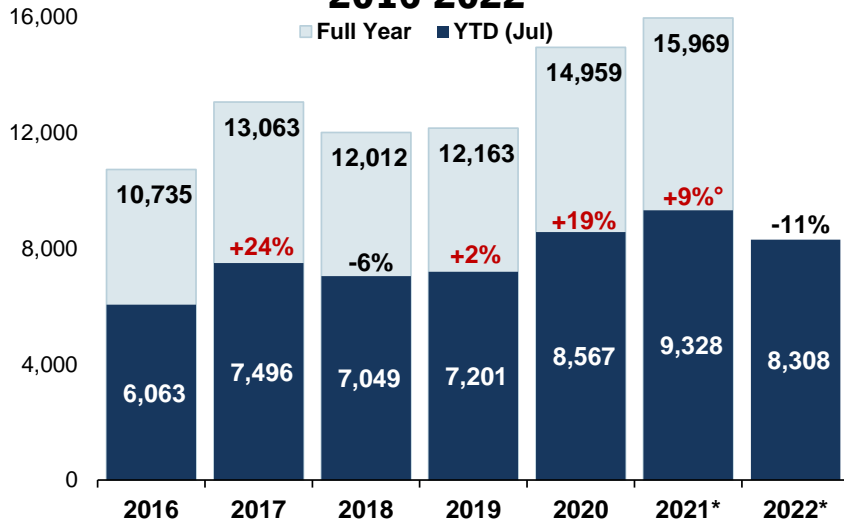
compared to **1,575** in July 2021

Data Source: NC DETECT: ED; Syndrome: Overdose: Unintentional/ Undetermined Medication or Drug Overdose (>14/<66) (ICD-9/10-CM)

<sup>^</sup>Report is based on initial encounter, **unintentional** and **undetermined** intent cases only, for ICD10CM overdose codes of drugs and medicaments with dependency potential within **T40, T42, T43, T50.7, and T50.9**.

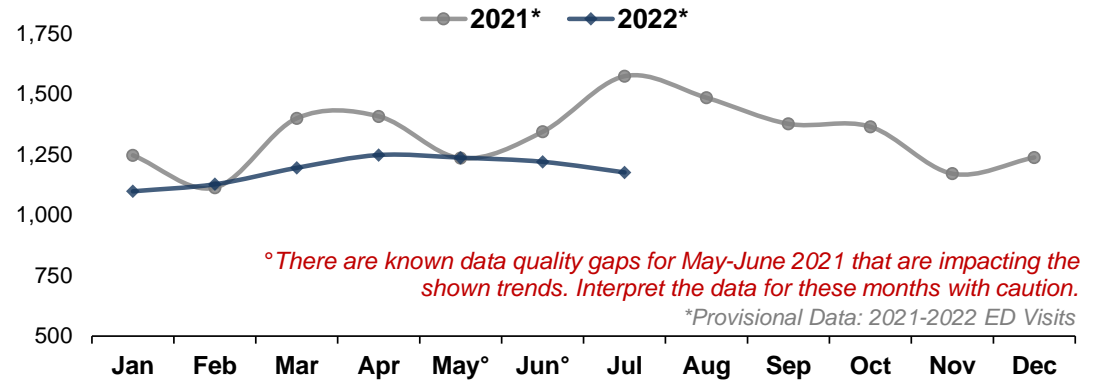
**Note:** Report is restricted to N.C. residents between the ages 15 to 65 years.

### Med/Drug<sup>^</sup> Overdose ED visits by Year: 2016-2022\*

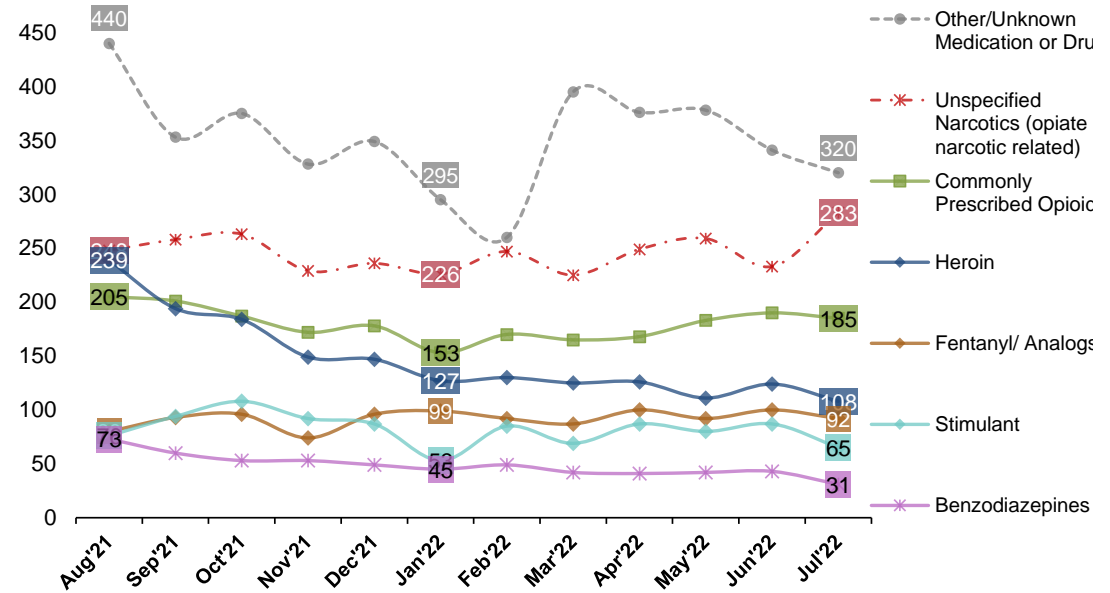


Percent change: YTD (year to date) total compared to YTD total of previous year, *There are known data quality gaps for May-June 2021 that are impacting the shown trends. Interpret the data for 2021 with caution.* \*Provisional Data: 2021-2022 ED Visits

### Med/Drug<sup>^</sup> Overdose ED visits by Month: 2021-2022\*

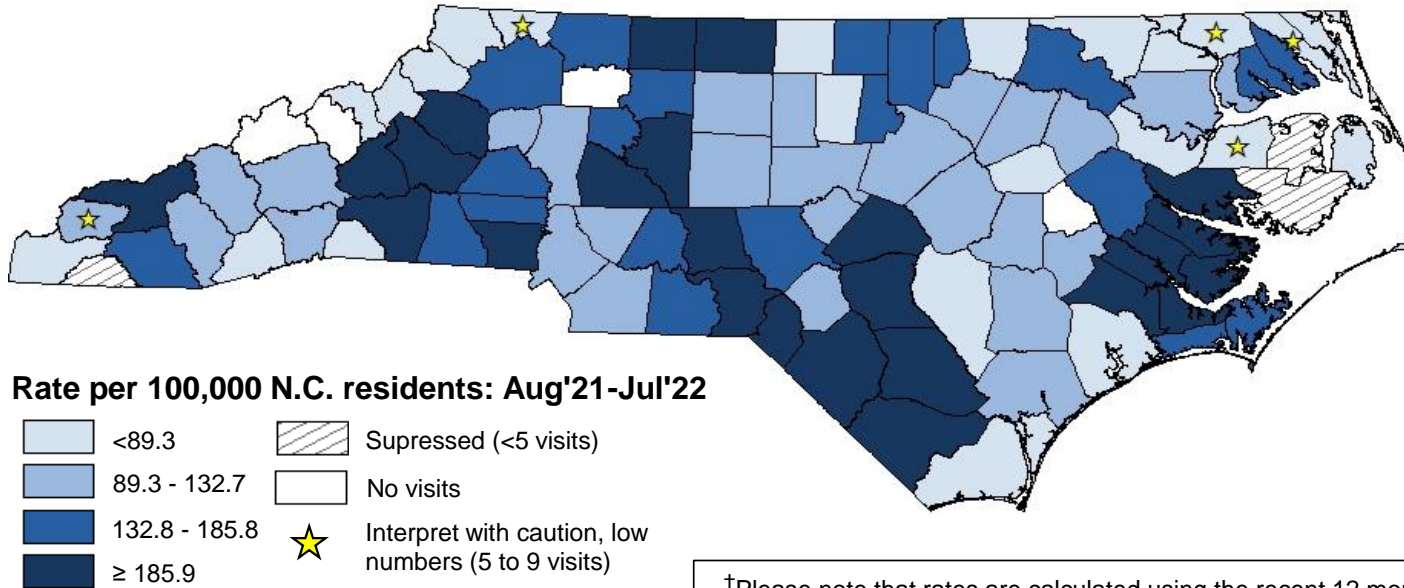


### Last 12 Months of ED visits by Med/Drug Class: 2021-2022\*

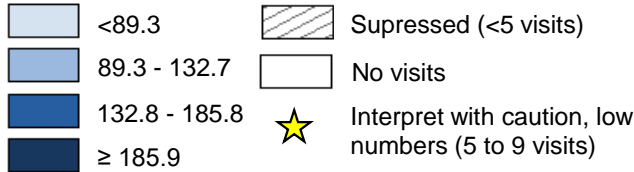


**Note:** Chart does not depict all possible drug classes. Drug classes shown are not mutually exclusive. A person may have more than one drug overdose diagnosis code, therefore, a person may be represented in multiple lines in the graph above. For case definitions, go to <https://www.injuryfreenc.ncdhhs.gov/DataSurveillance/poisoning/SummaryTableforPoisoningDefinitions.pdf>

# Last 12 Months Med/Drug^ Overdose ED Visits Rate by County of Residence:



Rate per 100,000 N.C. residents: Aug'21-Jul'22



## Highest Rates of Med/Drug^ Overdose ED visits among Counties Last 12 Months: Aug'21-Jul'22

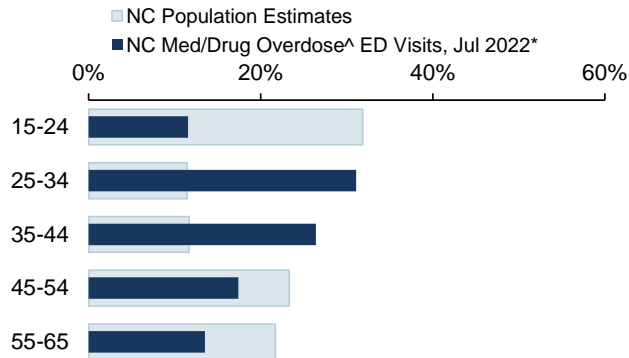
County	Count	Rate <sup>†</sup>
Robeson	601	460.1
Pamlico	49	385.0
Richmond	163	363.6
Scotland	116	333.1
Montgomery	85	312.8
Swain	40	280.3
Rutherford	186	277.5
Jones	25	265.4
Beaufort	122	259.6
Burke	216	238.7
Rockingham	217	238.4
Davidson	372	221.9
Stokes	100	219.3
<b>Statewide</b>	<b>8,308</b>	<b>79.2</b>

<sup>†</sup>Please note that rates are calculated using the recent 12 months of data and 2020 population estimates. Counties listed in "Highest Monthly Rates of Med/ Drug Overdose^ ED visits" table will likely change each month.

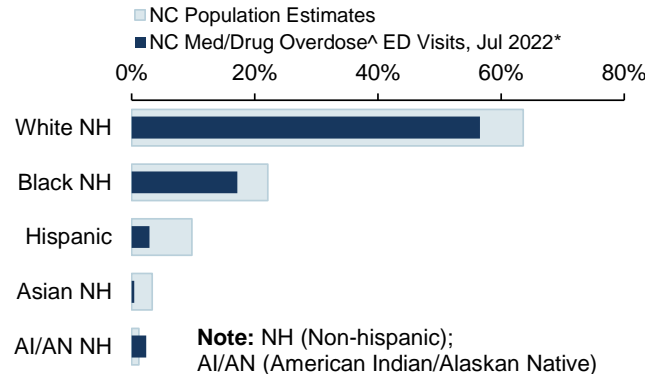
\*Provisional Data: 2022 ED Visits

## Demographics of Med/Drug Overdose^ ED Visits Compared to Overall NC Population Estimates

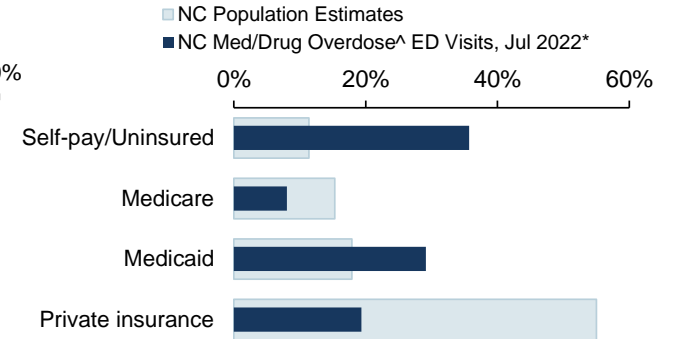
### ED Visits by Age Group



### ED Visits by Race Ethnicity



### ED Visits by Insurance Coverage



**Data Sources:** ED Data-NC DETECT is North Carolina's statewide syndromic surveillance system. ED visit data from NCDETECT are provisional and should not be considered final. For training on NCDETECT, contact Amy.Ising@ad.unc.edu; **Population Data**-U.S. Census Bureau, <http://quickfacts.census.gov>; **Insurance coverage Data**-Kaiser Family Foundation estimates based on the Census Bureau's American Community Survey, 2008-2019, [www.kff.org/other/state-indicator/total-population](http://www.kff.org/other/state-indicator/total-population).

<sup>^</sup>Report is based on initial encounter unintentional and undetermined intent cases only, for ICD10CM overdose codes of drugs and medicaments with dependency potential within T40, T42, T43, T50.7, and T50.9. **Note:** Report is restricted to N.C. residents between the ages 15 to 65 years. Self-pay ED visits are compared to the uninsured overall population estimate category.

\*Provisional Data: 2022 ED Visits



NC DEPARTMENT OF HEALTH AND HUMAN SERVICES  
Division of Public Health